

# Prognostic Factors and Survival in Patients With Non-Metastatic Soft Tissue Sarcoma (STS) of The Extremities



**Özger, H., Eralp, Y., Kaytan, E.,  
**Eralp, L., Yaman, F.****



*Univ. of Istanbul, Istanbul Medical School  
Dept. Of Orthopedic Surgery & Traumatology  
Institute for Oncology*

# **Dilemma in Strategy for Treating STS**

**Identification  
of a patient population  
with poor prognosis...**

## ✓ **Histopathologic Features**

✓ **Grade**

✓ **Subtype**

## ✓ **Topographic Features**

✓ **Depth**

✓ **Size**

✓ **Localization**

## ✓ **Surgical Features**

✓ **Margin**

## ✓ **Biologic Behaviour of the Tumor per se**



# Patients & Method

☒ 1991 – 1998

☒ 112 patients with non-metastatic extremity STS

☒ 52 received multimodality treatment

*(selected cases with a high risk for poor prognosis)*

# Patients & Method

- ❑ 17 F, 35 M
- ❑ Mean Age 38 (14 – 80)
- ❑ Majority high grade MFH
- ❑ < 10 cm. 24 pts.,  
>10 cm. 28 pts.



# Patients & Method

## ☒ Surgery

☒ *Wide margins %71*

## ☒ Adjuvants

☒ *RTx 18 pts.*

☒ *RTx+KTx 34 pts.*



# Patients & Method

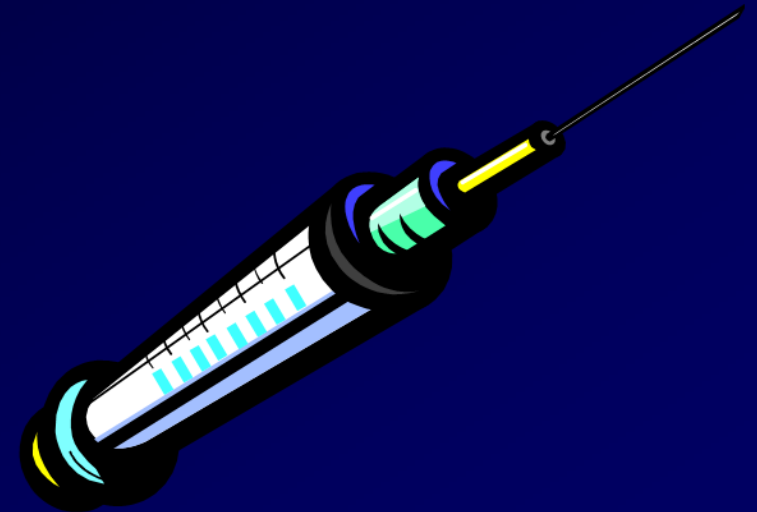
## ☒ KTx

☒ *Adjuvant* 15

☒ *Neoadjuvant* 13

☒ *Concomitant* 6

*Anthracyclin based chemotherapy*



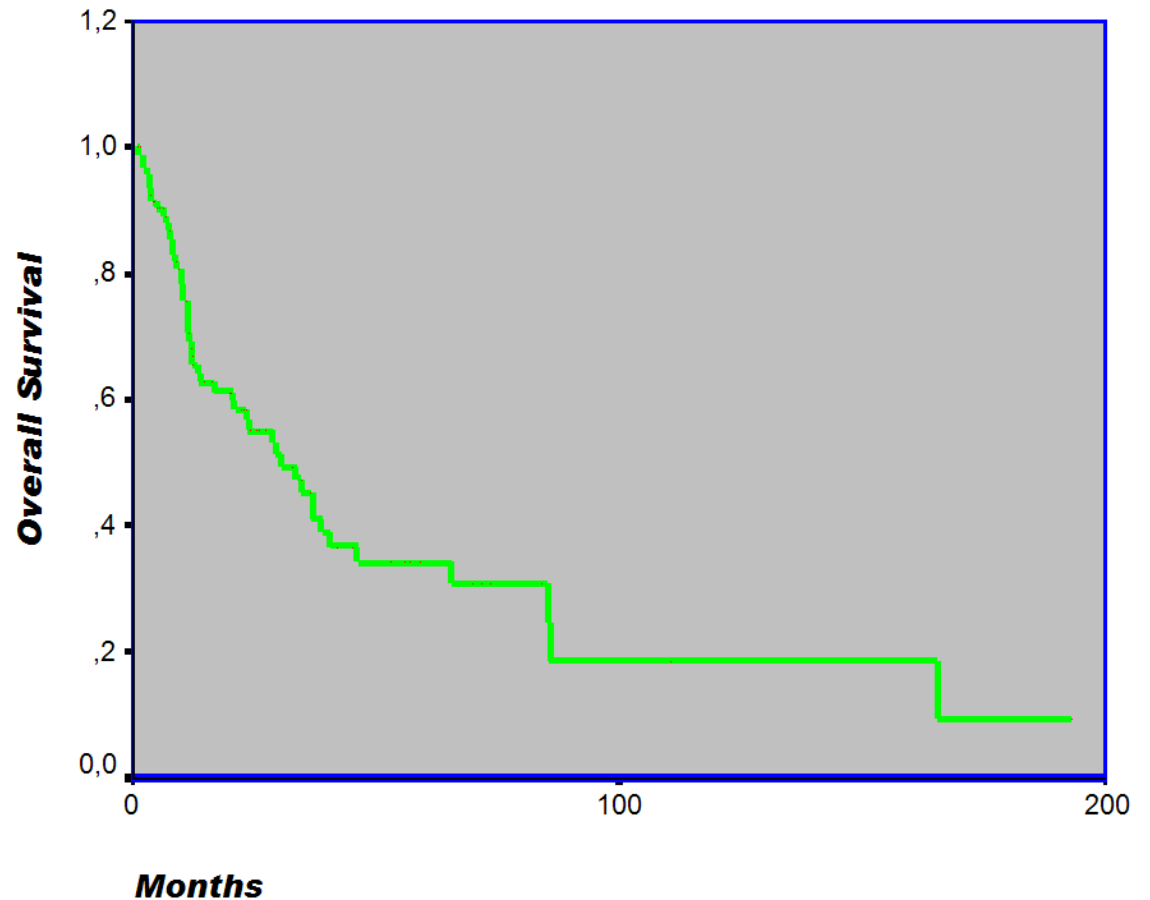
# RESULTS

☒ 5 year OS

%60.3±10.7

☒ 5 year PFS

%40.9 ±10.2



# RESULTS

☒ %90.3 had complete response (CR) after 1st line treatment

☒ *What does CR mean?*

☒ *Micrometastatic disease???*



☒ %9.7 had local relapse after a median of 14 mos.

☒ %32.3 had systemic relapse after a median of 33 mos.

## ✓ **Histopathologic Features**

- ✓ **Grade**

- ✓ **Subtype**

## ✓ **Topographic Features**

- ✓ **Depth**

- ✓ **Size**

- ✓ **Localization**

## ✓ **Surgical Features**

- ✓ **Margin**

## ✓ **Biologic Behaviour of the Tumor per se**

# Dilemma in Strategy for Treating STS

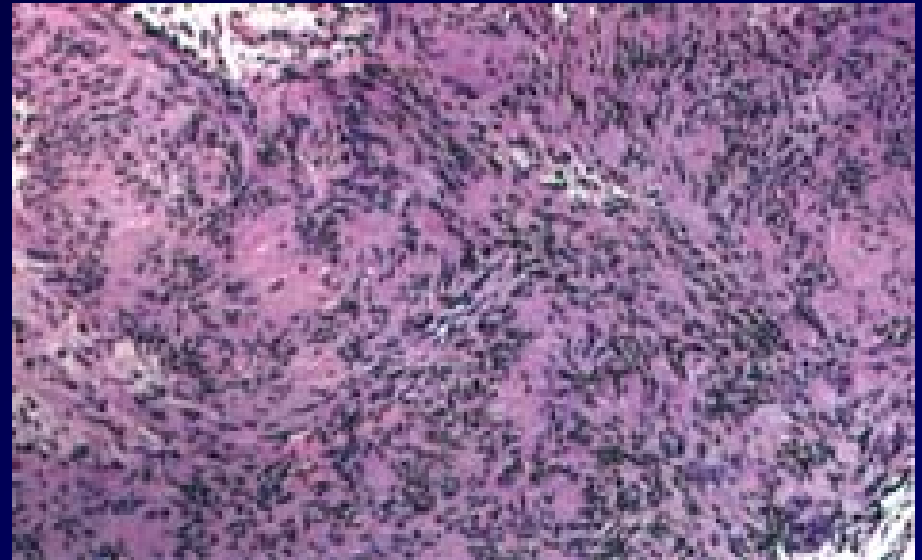
**Univariate**

**Analysis**

**$p \approx 0.05$**

***Great majority***

***Grade 3 Tumors***



## ✓ **Histopathologic Features**

- ✓ **Grade**

- ✓ **Subtype**

## ✓ **Topographic Features**

- ✓ **Depth**

- ✓ **Size**

- ✓ **Localization**

## ✓ **Surgical Features**

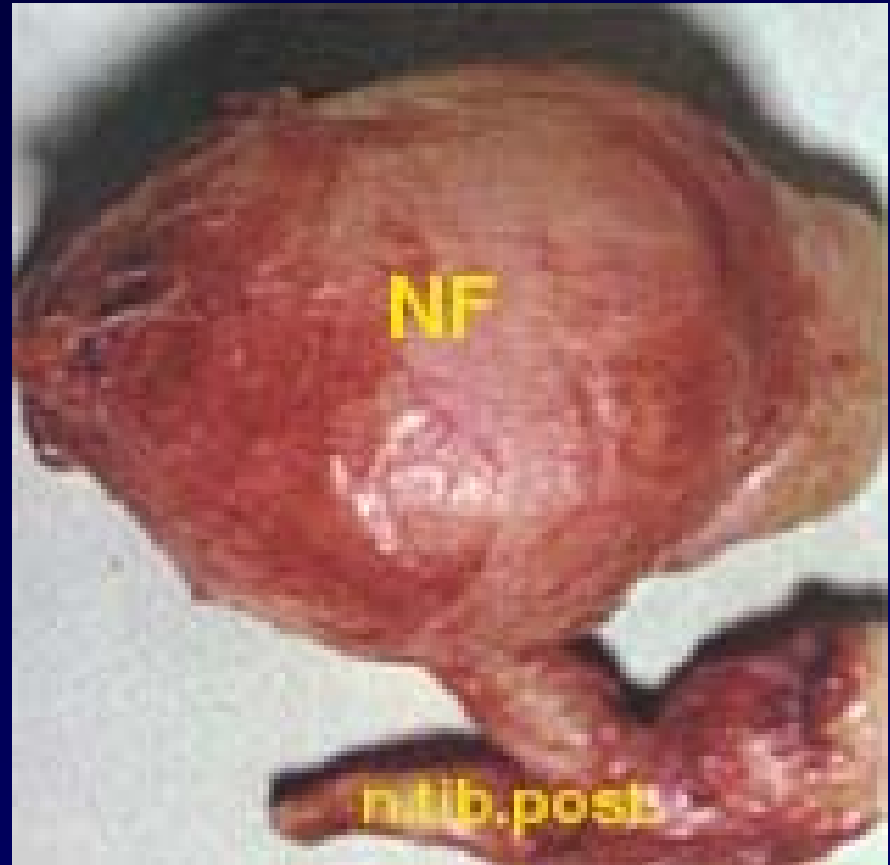
- ✓ **Margin**

## ✓ **Biologic Behaviour of the Tumor per se**

# Dilemma in Strategy for Treating STS

**Univariate  
Analysis**

**$P > 0.05$**



## ✓ **Histopathologic Features**

- ✓ **Grade**

- ✓ **Subtype**

## ✓ **Topographic Features**

- ✓ **Depth**

- ✓ **Size**

- ✓ **Localization**

## ✓ **Surgical Features**

- ✓ **Margin**

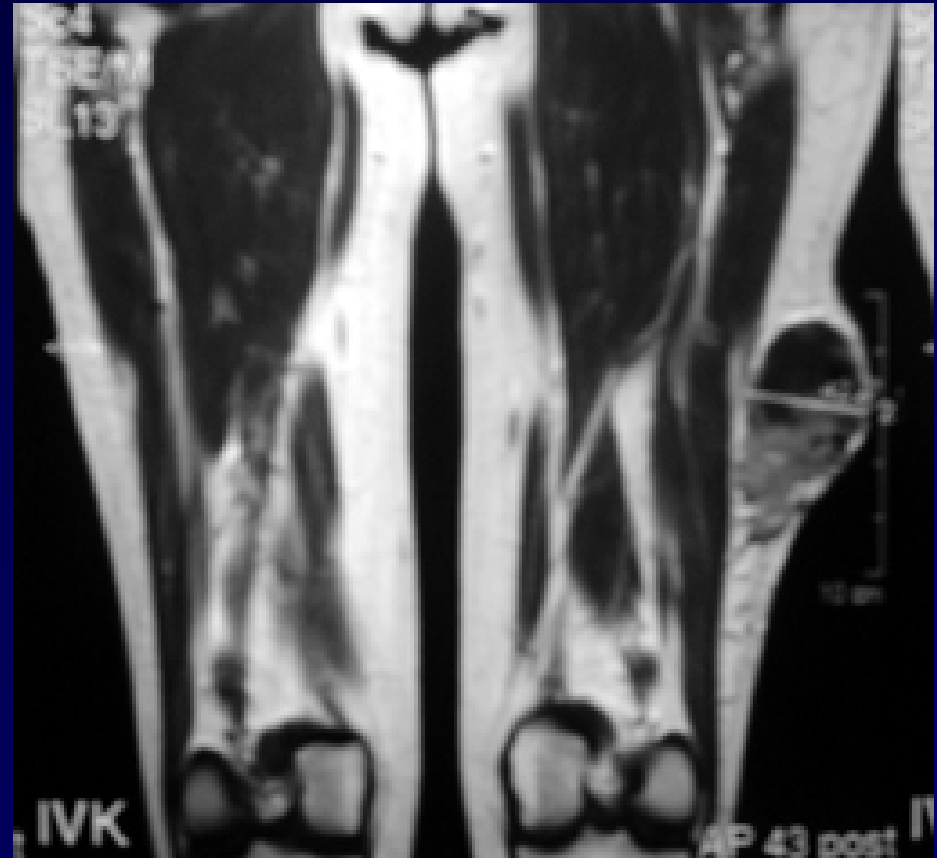
## ✓ **Biologic Behaviour of the Tumor per se**

# Dilemma in Strategy for Treating STS

**Univariate**

**Analysis**

**$P > 0.05$**



## ✓ **Histopathologic Features**

- ✓ **Grade**

- ✓ **Subtype**

## ✓ **Topographic Features**

- ✓ **Depth**

- ✓ **Size**

- ✓ **Localization**

## ✓ **Surgical Features**

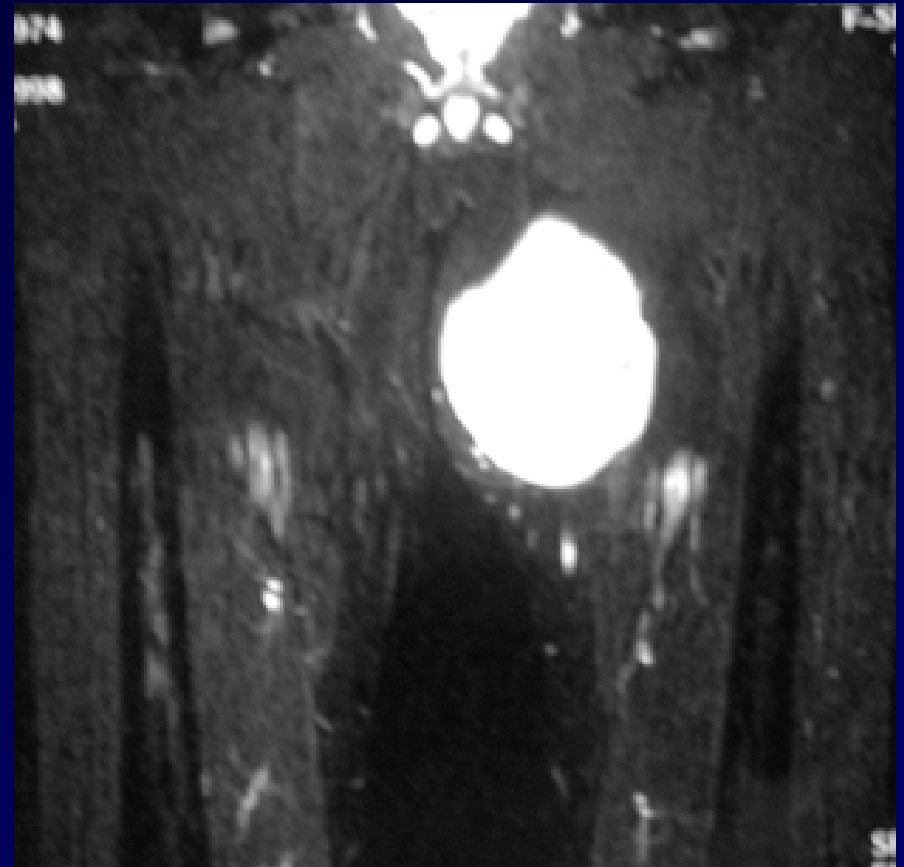
- ✓ **Margin**

## ✓ **Biologic Behaviour of the Tumor per se**

# Dilemma in Strategy for Treating STS

**Univariate  
Analysis**

**$P > 0.05$**



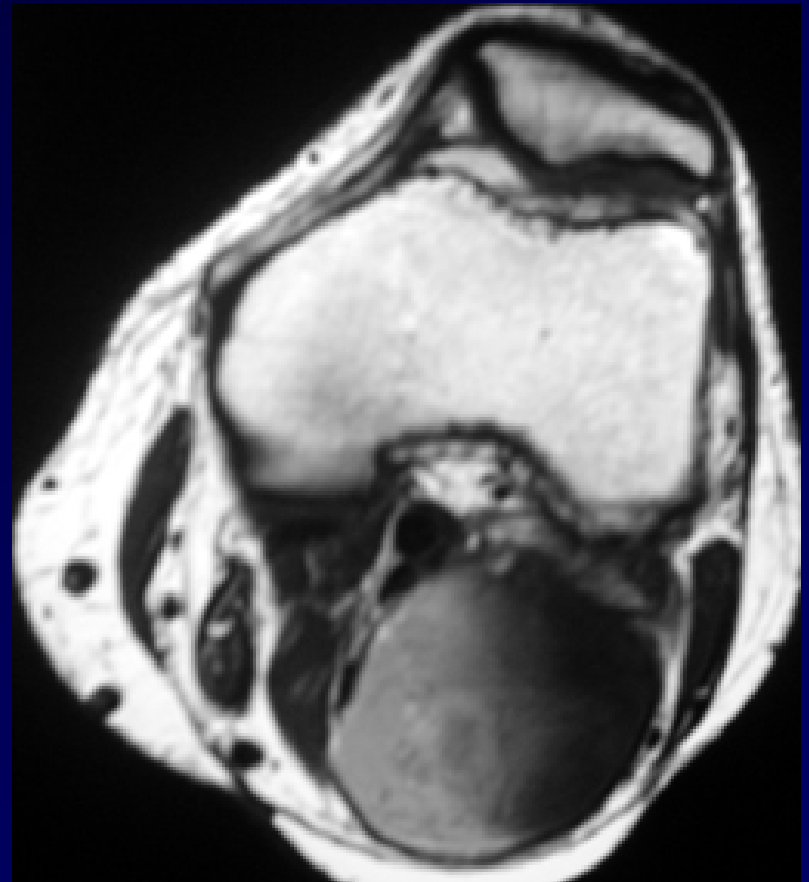
- ✓ **Histopathologic Features**
  - ✓ **Grade**
  - ✓ **Subtype**
- ✓ **Topographic Features**
  - ✓ **Depth**
  - ✓ **Size**
  - ✓ **Localization**
- ✓ **Surgical Features**
  - ✓ **Margin**
- ✓ **Biologic Behaviour of the Tumor per se**

# Dilemma in Strategy for Treating STS

**Univariate  
Analysis**

**P = 0.04**

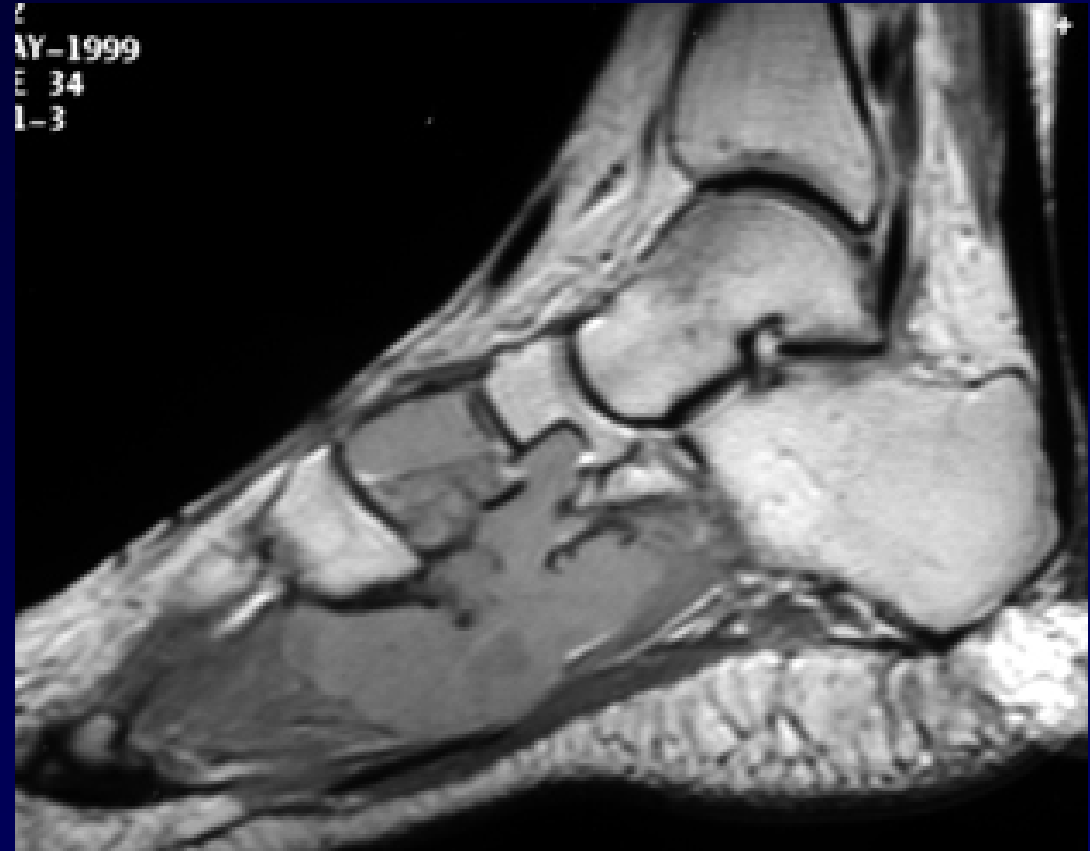
**(Flexor Fossae)**



- **34/M**
- **2 previous op. in poplitea  
(Baker'S Cyst!!!)**
- **Synovial Sarcoma**
- **WLE+RT<sub>x</sub>+KT<sub>x</sub>**
- **Systemic recurrence<12 mos.**



- **38/F**
- **Synovial Sarcoma in plantar fossa**
- **WLE+Free flap+RTx+KTx**
- **CDF at 14 mos.**



## ✓ **Histopathologic Features**

- ✓ **Grade**

- ✓ **Subtype**

## ✓ **Topographic Features**

- ✓ **Depth**

- ✓ **Size**

- ✓ **Localization**

## ✓ **Surgical Features**

- ✓ **Margin**

## ✓ **Biologic Behaviour of the Tumor per se**

# Dilemma in Strategy for Treating STS

## ← Univariate Analysis

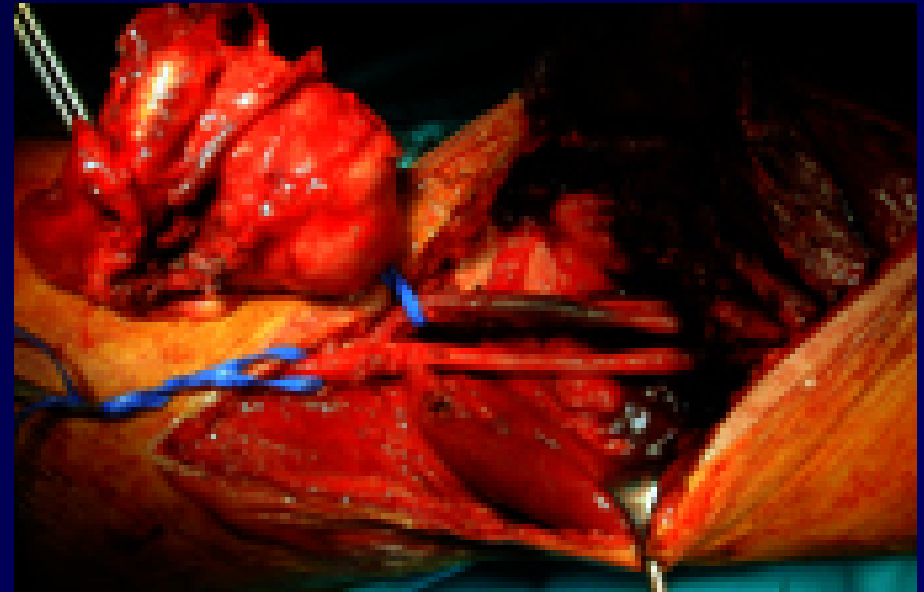
← 5 year PFS  $p=0.01$

## ← Univariate Analysis

← 5 year OS  $p=0.036$

## ← Cox Multivariate

← 5 year OS  $p=0.042$



## ✓ **Histopathologic Features**

- ✓ **Grade**

- ✓ **Subtype**

## ✓ **Topographic Features**

- ✓ **Depth**

- ✓ **Size**

- ✓ **Localization**

## ✓ **Surgical Features**

- ✓ **Margin**

## ✓ **Biologic Behaviour of the Tumor per se**

# Dilemma in Strategy for Treating STS

*CR and DFI > 12 mos.*

← **Univariate Analysis**

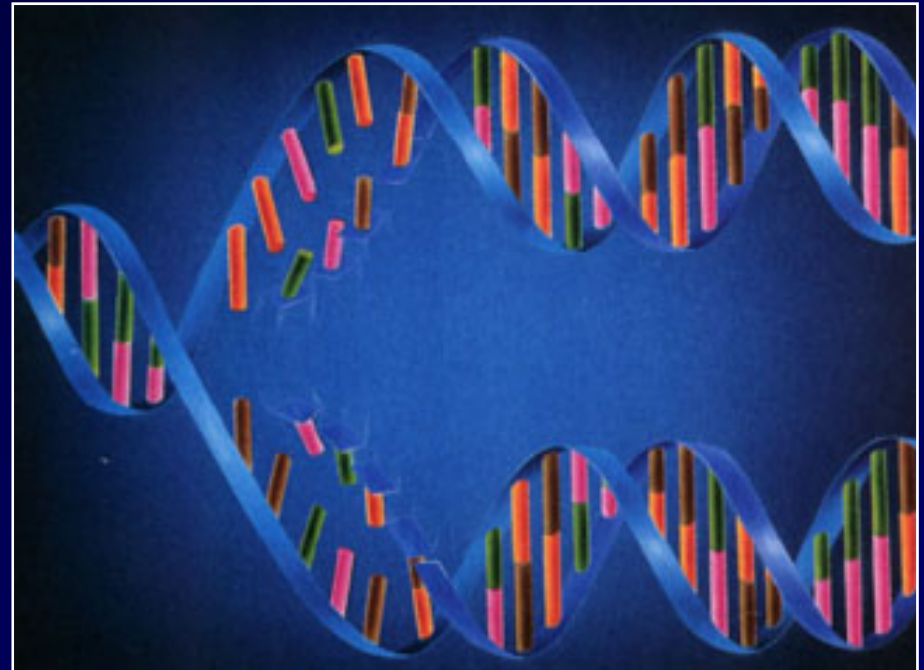
← **5 year PFS  $p=0.0001$**

← **Univariate Analysis**

← **5 year OS  $p=0.0018$**

← **Cox Multivariate**

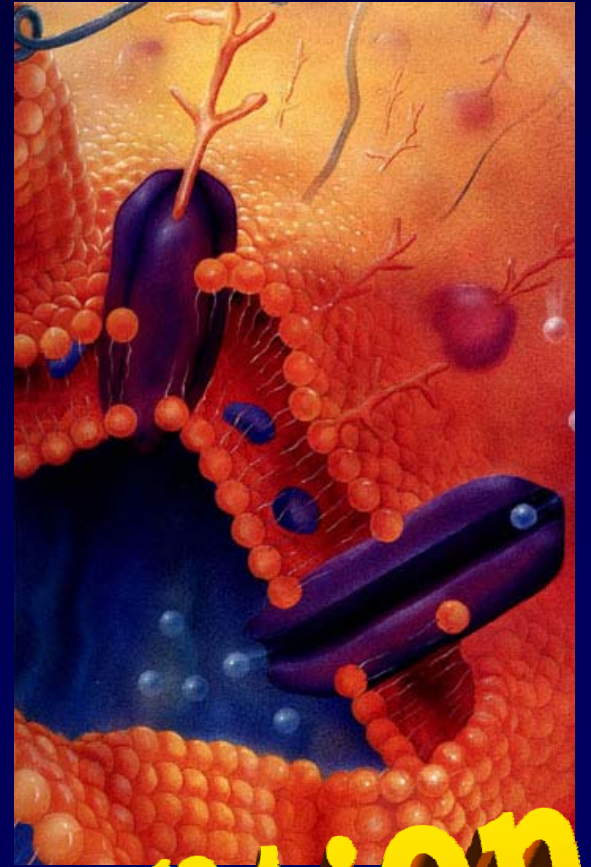
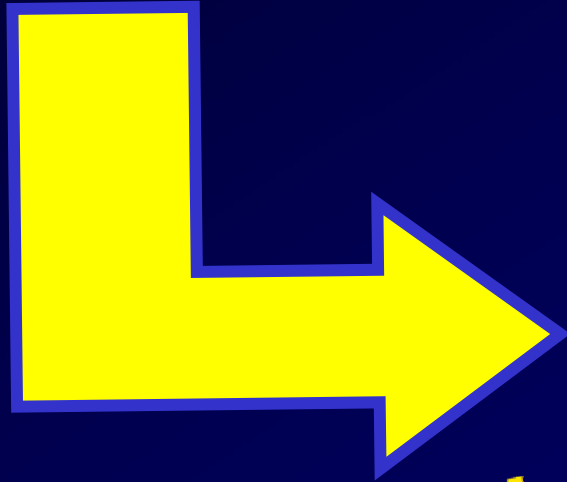
← **5 year OS  $p=0.0014$**



# CONCLUSION



**Complete and longer disease free state are factors which most probably reflect the favourable biologic behaviour of the tumor per se; most probably independent of response to RTx and KTx**



**Thank you for your attention**